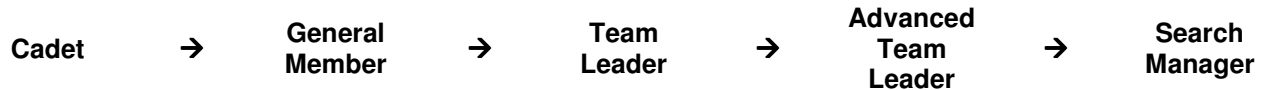


Marin County Search and Rescue Member Career Path

Name:

Membership in Marin SAR requires members to keep a wide variety of search and rescue skills sharp so they can be effective searchers. Members often inquire about how they can 'get to the next level' in their SAR career. The following document provides a description of the different levels that members can pursue while on the team and identifies the skills and experience necessary to move from one role to the next.



All members are expected to move from Cadet to General Member as prescribed in the Rules and Regulations. Further progression is not required, but strongly encouraged. The training calendar is designed to provide opportunities to develop specific SAR skills and members are encouraged to continue building their expertise in a wide variety of areas.

Each activity must be completed to be promoted to the next level. It is the member's responsibility to track their progress using this form and seek out educational opportunities. When an activity has been completed it must be signed and dated by a Search Manager or Training Team member (hereafter Proctor). To successfully complete any Independent Study (IS), the member will need to provide a copy of the course completion certificate.

Activities requiring the member to 'show proficiency' (or similar) will be subjectively evaluated by the proctor. To successfully complete an on-line training, a member will provide a copy of their certificate of completion to a proctor who will then sign them off. Upon completion of all activities in a level, the member will request that that council approve their promotion.

Cadet	Hours	Date	Signed
Individual who has successfully completed boot camp and is mission ready. They are completing their probationary term and learning all they can about a wide range of search and rescue skills.			
Hands-on			
<ul style="list-style-type: none"> • Complete boot camp 	50		
Classroom			
<ul style="list-style-type: none"> • Submit all required paperwork (distributed the first night of boot camp) to the Administrative Coordinator 	1		
<ul style="list-style-type: none"> • Complete IS-100: Introduction to the Incident Command System http://training.fema.gov/EMIWeb/IS/IS100A.asp 	3		

Last Name:

General Member	Hours	Date	Signed
This individual understands common team procedures, can demonstrate basic search and rescue skills, is an active member of a field search team, understands basic search management and continues to develop their SAR skills by exploring more advanced topics.			
Probation			
• Pass Cadet Exam (make every effort to take when offered)	.5		
• Pass Cadet Pack Check (make every effort to take when offered)	.5		
• Complete probation (within 12 months of becoming a Cadet)	-		
Hands-on			
• Complete first responder (within 18 months from becoming a Cadet)	50		
• Demonstrate proficiency in computers, plotters and mapping programs	4		
• Demonstrate proficiency in GPS, compass use, and map reading	4		
• Demonstrate proficiency in patient packaging and carry outs	4		
• Demonstrate proficiency in equipment care (i.e. use, repack, and replace properly)	2		
• Complete vehicle training (members 18 and older) <ul style="list-style-type: none"> ○ SAR 1 (21 and over) ○ SAR 2-6 ○ 4x4 operations 	2		
	3		
	3		
Classroom			
• Obtain/maintain CPR certification	4		
• Complete IS-700: National Incident Management System, An Introduction http://training.fema.gov/EMIWeb/IS/is700a.asp	3		
• Demonstrate an understanding of Marin SAR Training Plans (within 18 mo) http://www.marinsar.org/Training/index.htm	2		
• Complete Boy Scouts of America Youth Protection Training http://www.learningforlife.org/exploring/index.html	2		
Optional			
• Complete vehicle training (members 21 and older) <ul style="list-style-type: none"> ○ Trailers - hooking up, pulling, backing up ○ ATV 	3		
	4		
• Complete boat operations training	6		

Last Name:

Team Leader	Hours	Date	Signed
This strong contributor has demonstrated SAR skills in a wide variety of areas. This person regularly take a leadership role during trainings, understand search team management during missions, have held positions in the command post, shown technical proficiency and have explored the academic components of effective leadership.			
Hands-on			
• Member of Marin SAR for minimum of 1 year	-		
• Meets attendance expectations (75% of mandatory meetings & searches)	-		
• Work in Plans Section for at least 1 search/training	4+		
• Demonstrate proficiency in back country navigation (i.e. off trail)	4		
• Demonstrate proficiency in basic man-tracking skills	4		
• Demonstrate proficiency in Low Angle systems and litter rigging	4		
• Demonstrate proficiency in Radio use and etiquette	1		
• Proctor at least 2 team training topics	2		
	2		
Classroom			
• Complete IS-200: ICS For Single Resources and Initial Action Incident http://training.fema.gov/EMIWeb/IS/IS200A.asp	4		
• Complete IS-240: Leadership and Influence http://training.fema.gov/EMIWeb/IS/is240.asp	9		
• Complete IS-241: Decision Making and Problem Solving http://training.fema.gov/EMIWeb/IS/is241.asp	8		

Last Name:

Advanced Team Leader	Hours	Date	Signed
<p>An experienced individual who relies on a wide-range of mission experience to effectively manage and motivate a diverse group of searchers in a variety of mission scenarios. This person often instructs during training and demonstrates an in-depth level of knowledge about many SAR topics. This person will have held a majority of roles in the command post with increasing levels of responsibility.</p>			
Hands-on			
• Member of Marin SAR for minimum of 2 years	-		
• Meets attendance expectations (75% of mandatory meetings & searches)	-		
• Work in Plans Section for at least 2 missions/trainings	4+		
	4+		
• Work in Operations Section for at least 2 missions/trainings	4+		
	4+		
• Participate in at least 3 mutual aid back country missions <ul style="list-style-type: none"> ○ One mission must be high-alpine (5,000ft +) 	24+		
	24+		
	24+		
• Lead at least 1 evidence search	4+		
• Complete at least one shift in County Communications Center	4		
• Complete an advanced technical rigging class	40+		
• Coordinate & lead at least one all-team training	10+		
Classroom			
• Complete IS-701: Multi-Agency Coordination Systems http://training.fema.gov/EMIWeb/IS/is701.asp	5		
• Complete IS-242: Effective Communication http://training.fema.gov/EMIWeb/IS/IS242.asp	8		
• Read and demonstrate understanding of <i>SAR Mutual Aid Guidelines</i> http://www.marinsar.org/PrePlan/index.htm	4		
• Complete BASARC Section Chief class	32		
• K9 Scent Theory Class	2+		
• K9 Training	4+		

Last Name:

Search Manager	Hours	Date	Signed
<p>Individuals who draw on extensive training and mission experience to coordinate and direct the efforts of local and mutual aid resources. They regularly demonstrate expertise in all areas of search and rescue and continue to pursue academic development of their skills. Able to set mission objectives and effectively direct teams independently. Regularly demonstrate thought leadership and take a significant role in the team's direction and administration.</p>			
Hands-on			
• Member of Marin SAR for minimum of 3 years	-		
• Meets attendance expectations (75% of mandatory meetings & searches)	-		
• Attend minimum of 3 council meetings in last 12 months	2		
	2		
	2		
• Complete at least one ride-a-long with a Sheriff's Deputy	4		
• Attend 2 BASARC meetings	4		
• Serve as At Home Search Coordinator for two missions	5		
• Lead at least two missions	4+		
	4+		
• Work in Plans Section for at least 2 missions/trainings	4+		
	4+		
• Work in Operations Section for at least 2 missions/trainings	4+		
	4+		
Classroom			
• Attend CalEMA Direction and Control of the Search Function	40+		
• Complete ICS 300	16		
• Complete IS-800.b: National Response Framework, An Introduction http://training.fema.gov/EMIWeb/IS/IS800b.asp	3		
• Complete IS-244: Developing and Managing Volunteers http://training.fema.gov/EMIWeb/IS/IS244.asp	10		
• Demonstrate understanding of <i>Marin SAR Pre-Plan</i> http://www.marinsar.org/PrePlan/index.htm	4		
Optional			
• Attend CalEMA Direction and Control of Winter Search	40+		
• Complete ICS 400	16		

